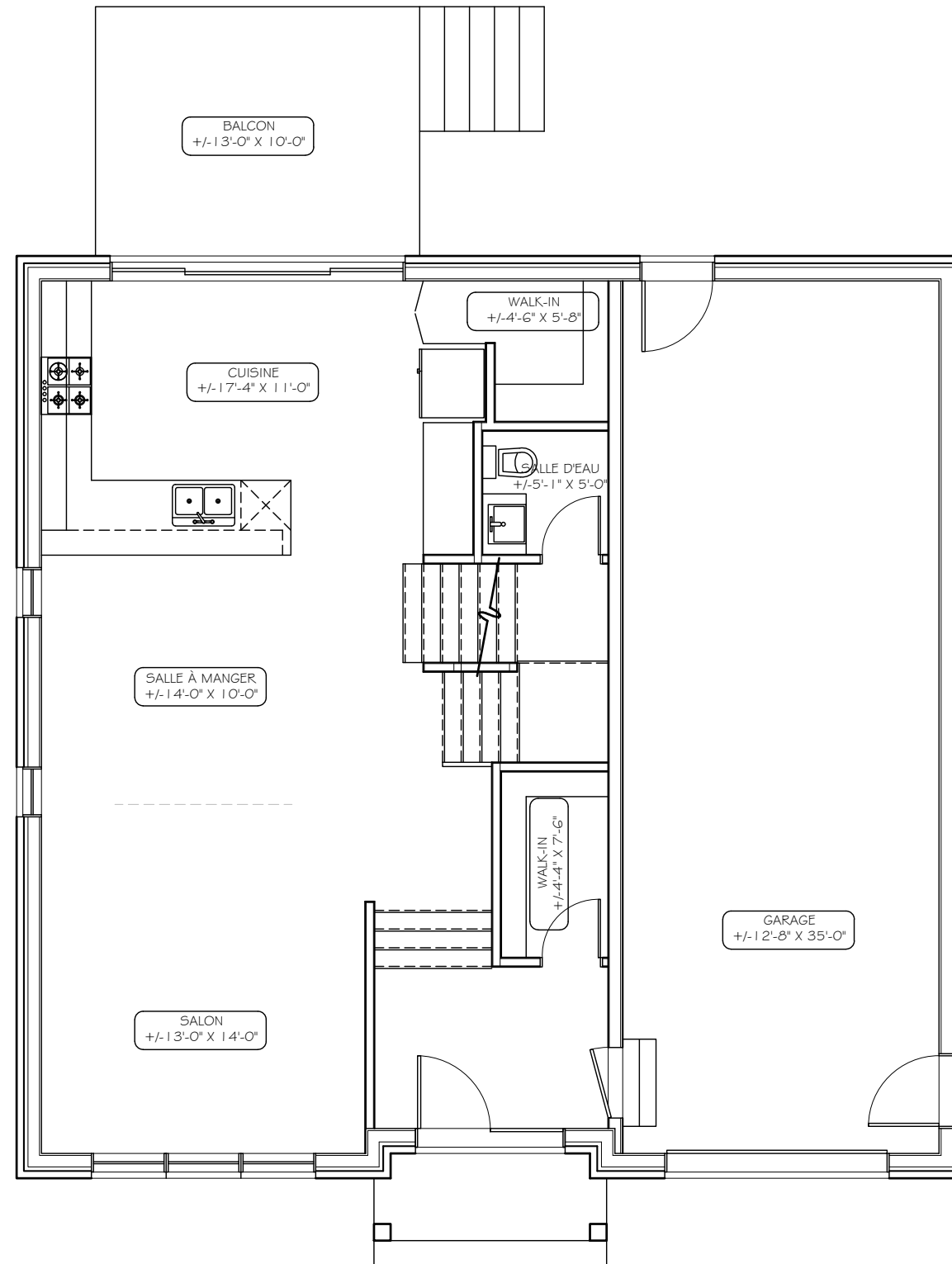
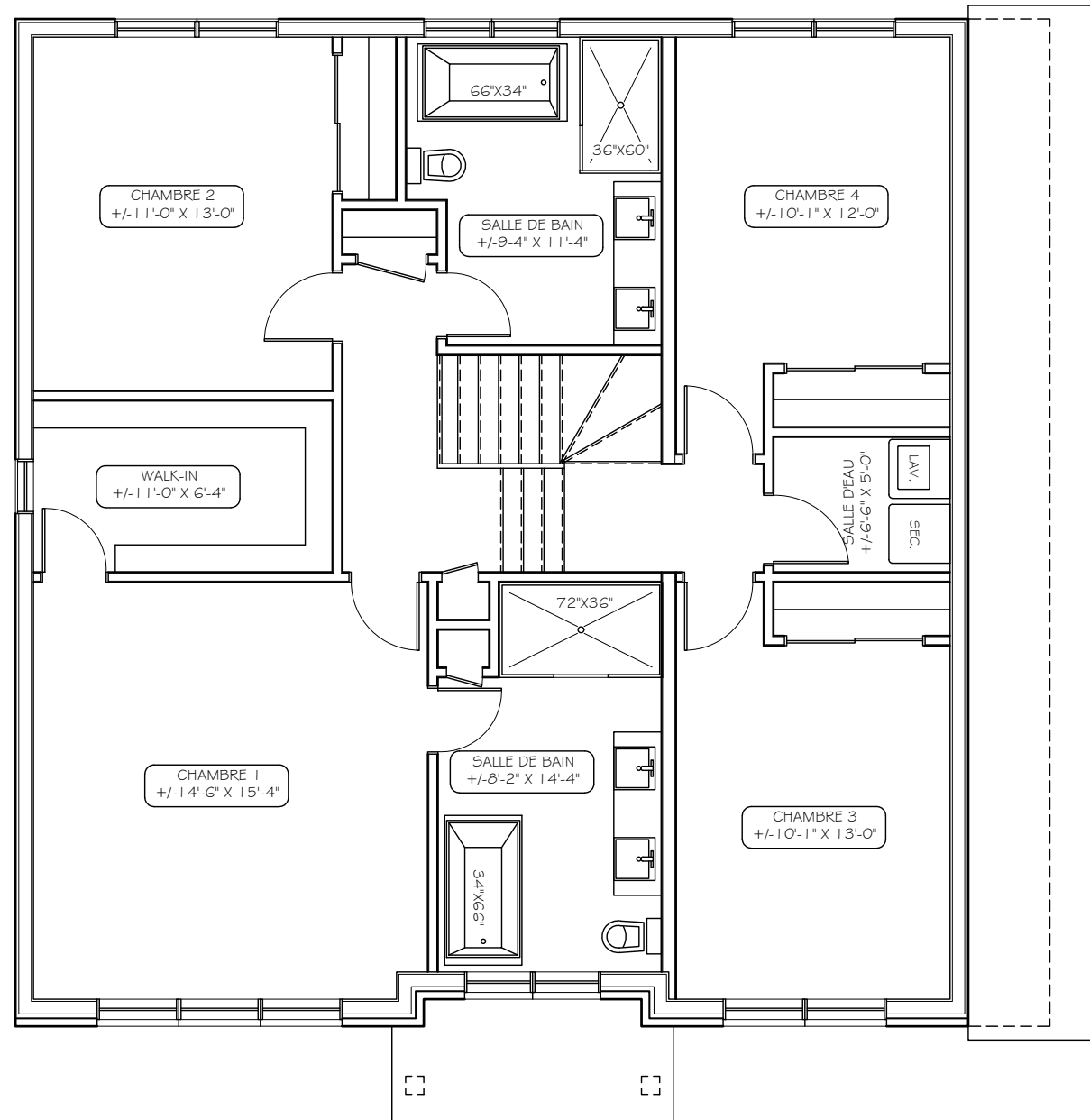


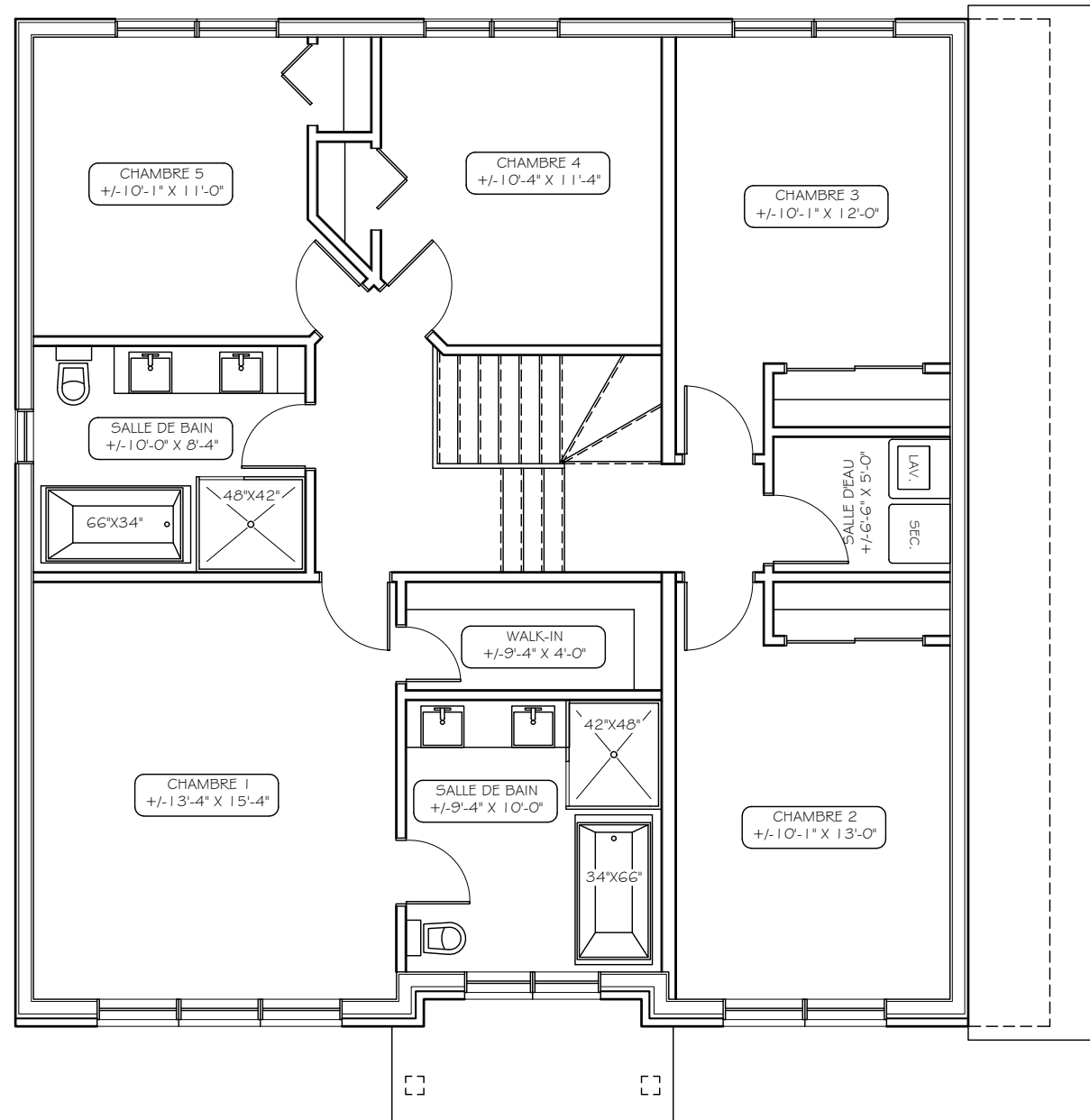
PI.CA. HABITABLE : 954 R.D.C.+ 1 287 ÉTAGE = 2241  
 PI.CA. AUTRE : 444 GARAGE, 954 SOUS-SOL



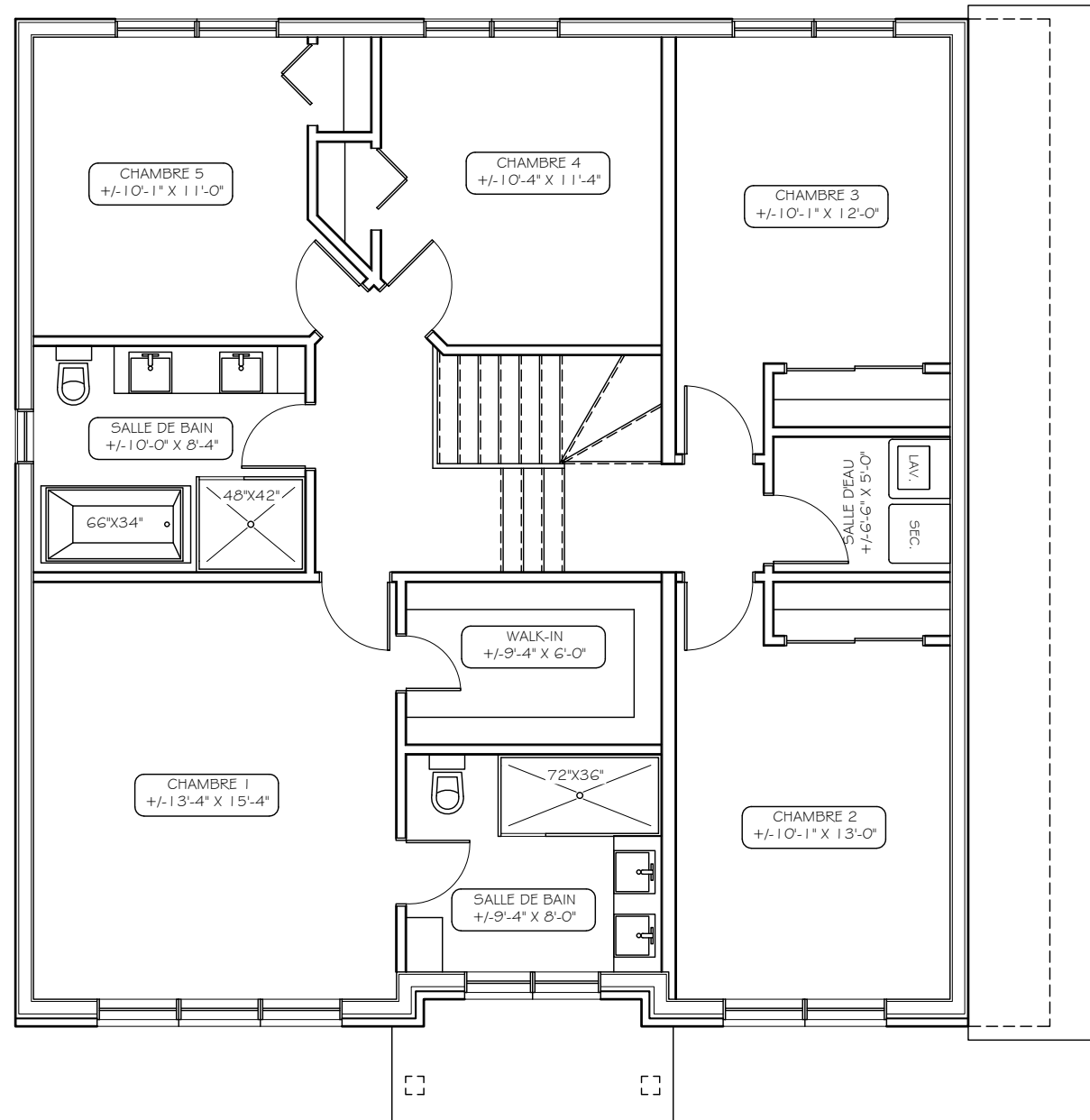
PI.CA. HABITABLE : 954 R.D.C. + 1 287 ÉTAGE = 2241  
 PI.CA. AUTRE : 444 GARAGE, 954 SOUS-SOL



PI.CA. HABITABLE : 954 R.D.C.+ 1 287 ÉTAGE =2241  
 PI.CA. AUTRE : 444 GARAGE, 954 SOUS-SOL



PI.CA. HABITABLE : 954 R.D.C.+ 1 287 ÉTAGE =2241  
 PI.CA. AUTRE : 444 GARAGE, 954 SOUS-SOL



PI.CA. HABITABLE : 954 R.D.C.+ 1 287 ÉTAGE =2241  
 PI.CA. AUTRE : 444 GARAGE, 954 SOUS-SOL